

Busy Bee

A Free Pattern By Multifavs



Buzz! Buzz! With their sunny yellow coloring and cheery smiles, these adorable little bees will be sure to bring you joy. With this free pattern and tutorial, you can make your very own Busy Bee! While they may not *actually* be busy themselves, making them will keep you busy!

I would call this an *intermediate-level* project; while not overly difficult, it does involve a lot of pieces, so I wouldn't recommend it for beginners. If you want to try a simpler pattern, check out my *Floppy Puppy* tutorial: https://0aaaa335-3b20-4bef-b2a1-c8dee0997bde.filesusr.com/ugd/17ce96_2eb415dce5e846fb8e5befa1b1bde2bb.pdf

This plushie can be made using a variety of fabrics and can be sewn either by hand or by machine. My instructions will be based on machine-sewing as that's what I do.

First let's take a quick look at the free pattern:

<https://i.imgur.com/vjuOi69.png>

Each pattern piece is labeled with its name, the fabric you need to use, how many you need to cut out, and how many you need to trace reversed. The **purple** lines indicate where to attach a piece or where to start/end a seam. The writing in **purple** tells what a part of a pattern piece is or where to attach it. The **purple** arrows indicate the direction the pile should run in.

Note: The eye pieces are optional and only need to be used if you use fabric eyes.

Materials you'll need:

- Yellow, black, and white fabric (for an original-sized bee, a quarter yard of each should be plenty. You may need more for a larger one)
- A small amount of black fabric (fabric eyes only)
- Hand-sewing needles
- Yellow hand-sewing thread
- Black and pink embroidery floss
- Sewing machine with machine-sewing thread and needles
- Pins or hand-sewing thread for basting
- Scissors
- Marking tools that will not show through the fabric (I recommend a disappearing-ink marker for most light fabrics and a metallic silver

marker for dark fabrics. Regular markers are better suited for light faux fur fabrics that have a stiffer backing)

- Stuffing tool, such as a stuffing stick or unsharpened pencil

- Polyester fiberfill

- Two black plastic eyes (large eyes look good on bees; I used 18mm)

(Gold materials are optional. A sewing machine is not needed if you sew the plushie by hand.)

Step 1: Cutting Out the Pieces

Print the pattern in the desired size. Printing with the setting “Best fit to page” selected produces a bee about 8 in. (20 cm) long, like the smaller one in my photo. Printing at original size may make a slightly smaller bee. The larger one was printed at 150% size and is about 12 in. (30 ½ cm) long. You can make yours larger, smaller, or original size, whatever you prefer.

The entire pattern will fit on one page if you print at original size or best fit to page. Less than 100% size will also fit on one page but may be more difficult to sew. Larger than 100% size will need to be printed on multiple pages.



Cut out the printed pattern pieces and trace them onto the fabric you want to use. If your fabric has a wrong side, you'll need to reverse the pieces indicated in the pattern. If you plan to use plastic eyes, cut a tiny hole in both the paper head side piece (for marking the placement) and the fabric head side pieces (to fit the eyes through).

Transfer the marks indicating where to start/stop seams and where to attach parts onto the fabric pieces. If using plastic eyes, mark their placement as well. The pattern does not include seam allowance, so you'll need to add it while tracing the pieces. (Only the fabric eyes, if you use them, do not need seam allowances.) If you use a fabric with a

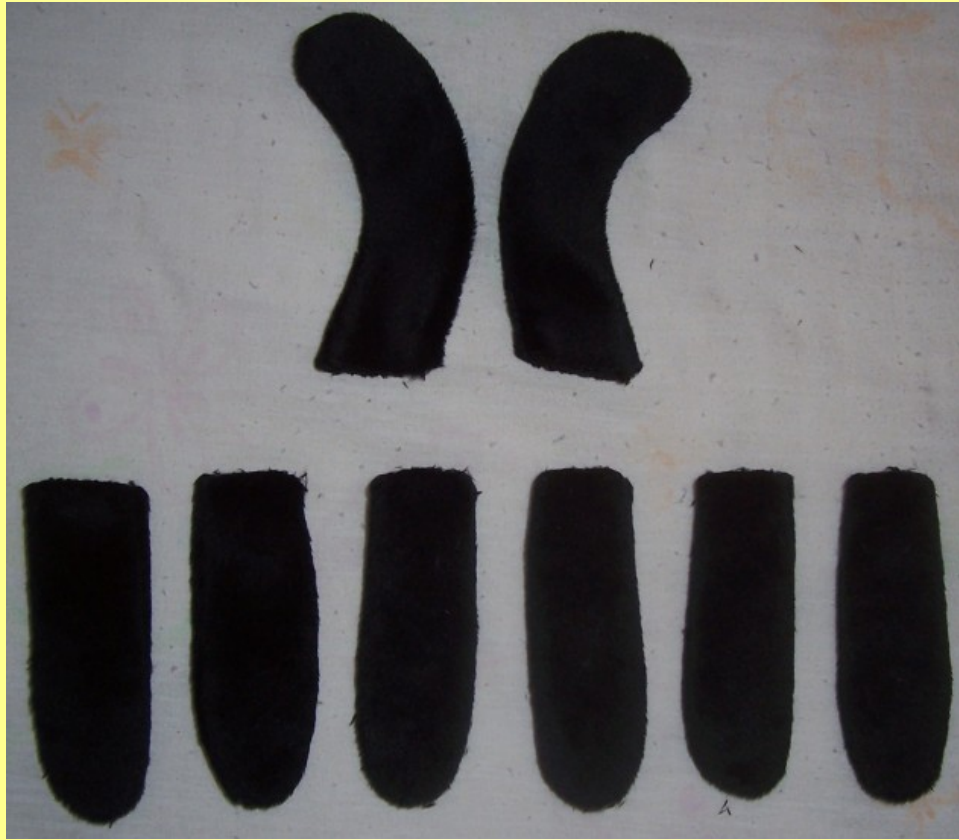
pile, make sure to cut through only the backing, and place the pieces so that the pile direction follows the arrows.



Now that you have your pattern pieces made, you can start sewing!

Step 2: Sewing the Small Pieces

Start with black thread. Place two antenna pieces right sides facing and sew, leaving the flat end open. Repeat for the other antenna and the six legs. Clip the seam allowances and turn the pieces right-side-out.



Switch to white thread. Place two wing pieces right sides facing and sew, leaving the flat end open. Repeat for the other wing. Clip the seam allowances and turn the pieces right-side-out.



These pieces don't need to be stuffed, but there are multiple options if you do want to stuff them. Wires or pipe cleaners inside the antennae and legs will make them poseable, or you can stuff them lightly with polyester fiberfill. You could even put a magnet inside two or more feet so your bee can grip onto magnetic surfaces!

If you want to make the wings stiffer, make a lining for them. To do that, cut two more wing pieces out of a stiffer fabric and sew each one to one side of each wing. When you're done, baste all the open ends closed.

Note: If the bee is intended for a young child, do not use wires, pipe cleaners, or magnets.

Step 3: Sewing the Head

Use yellow thread for the rest of the work. Fold the antenna dart and place the antenna inside, facing toward the inside of the fold. Cut the seam allowance in the center if you have trouble fitting the antenna. Repeat for the other side.



If using fabric eyes, either appliqué them using satin stitches or sew them on by hand before continuing.

Sew the sides of the head from front to back, making sure to keep the antennae out of the seam.



Sew the two head sides to the chin, continuing to keep the antennae out of the seam. The chin piece is slightly bigger than the head side pieces, so you may have to cut off any extra fabric after sewing the seam.



Clip the seam allowances of the head, turn it right-side-out, and insert plastic eyes if using them.



Step 4: Sewing the Body

Lay out the body pieces, except for the belly, as shown on the pattern. First, sew the body front to the front body stripe; then the body middle to the back body stripe; next, the back body stripe to the body back; and finally the stinger to the body back as marked. Repeat for the other side, and you should get something like this:



Now, sew the front body stripe to the body middle, attaching the wing as marked, and repeat for the other side. Sewing this seam last keeps the wings away from the other body seams.



Sew the back seam from the neck to the other end just below the stinger, aligning and sewing the two sides of the stinger together in this seam. Leave an opening in the back for turning right-side-out and stuffing. This opening should be on the body middle piece or a little larger, whatever you prefer.



Baste the legs to the outside of the body facing upward, three on each side. Try to align one leg to the front body stripe, one to the body middle, and one to the back body stripe on each side. While this step isn't absolutely necessary, it does make sewing the belly a lot easier.



Sew the belly to the body, including the legs in this seam. Be sure to keep the wings out of the seam, and sew carefully around the back

near the stinger. Like the chin, the belly may be slightly bigger than the body, but all you have to do is cut off any extra fabric after sewing the seam. Clip the body seam allowances.



Sew the neck seam to attach the head to the body, aligning the chin/belly and back seams. Make sure to keep the antennae and wings away from the seam. For this step, you can either place the right-side-out head inside the inside-out body, or you can turn the head inside out and baste the neck seam before sewing.



Step 5: Stuffing and Finishing

Clip the neck seam allowances and carefully turn the bee right-side-out. Use a thin, blunt tool like a stuffing stick or unsharpened pencil to help, if needed.



Now you can stuff your bee. Start by using a stuffing tool to push a tiny wad of stuffing into the tip of the stinger, and then fill the rest of the stinger with small wads. Use larger wads of stuffing to fill the head and body. If you want, you can also use plastic pellets in the belly, but secure them inside fabric beanbags if the bee is intended for a child. My Floppy Puppy tutorial shows how to do that.

When you're satisfied with your stuffing job, close the opening in the back using ladder stitches.



Use three strands of embroidery floss and a long needle to embroider the facial details. Embroider the mouth as a wide “U” shape using black floss, pulling gently to indent it slightly. To make cheeks, use pink floss and make a few small horizontal stitches slightly below and behind each eye. (I used three stitches on my smaller bee and four on my larger one.) Place all knots created to start and end the embroidery in a place where they won’t be easily seen, like right behind the antennae.

Congratulations! You’ve made your very own Busy Bee! I hope your cute new friend brings you lots of cheer! ☺







You can experiment with these plushies. By changing the markings, colors, fabric, wings, and stinger, you can make all kinds of bugs, not just bees! Bee creative and **have fun!!**

-Multi



*Pattern, plushies, photos, and tutorial by Multifavs
October 2021*